

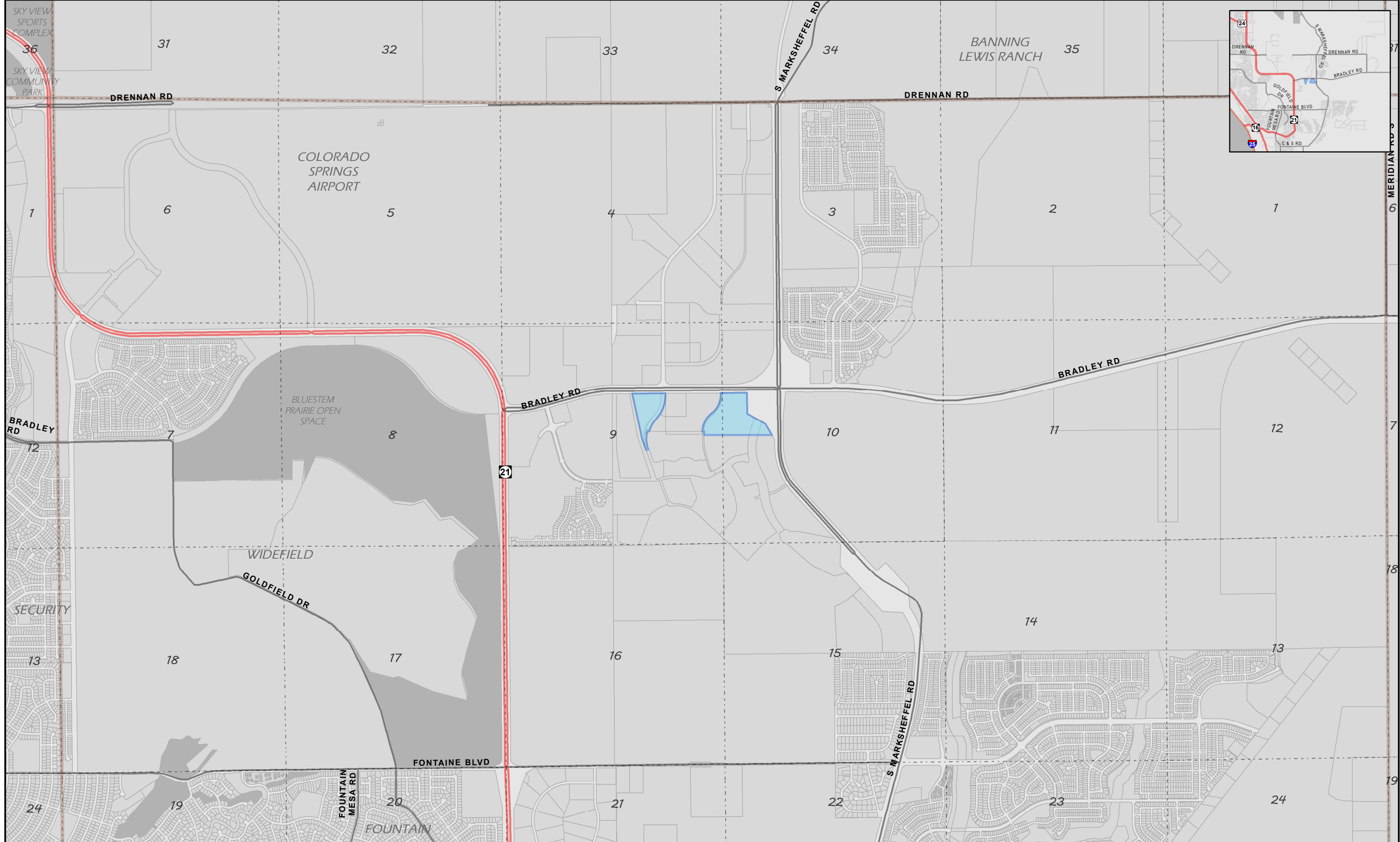
# BRADLEY HEIGHTS MD #3

 Tax Boundary

1 inch = 2,038.5 feet

08/26/2021 EPC Assessor's Office  
NAD\_1983\_StatePlane\_Colorado\_Central\_FIPS\_0502\_Feet  
Projection: Lambert\_Conformal\_Conic

COPYRIGHT 2018 by the Board of County Commissioners, El Paso County, Colorado. All rights reserved. No part of this document or data contained hereon may be reproduced, used to prepare derivative products, or distributed without the specific written approval of the Board of County Commissioners, El Paso County, Colorado. This document was prepared from the best data available at the time of plotting and is for internal use only. El Paso County, Colorado, makes no claim as to the completeness or accuracy of the data contained hereon.



6  
7  
18  
19